



MISSION INNOVATIVE INDIA

... Launch, 2005

"The faculty members of EMPI could select the top three innovations in each of the area and prepare them as case studies for the students of EMPI. The television partner NDTV and the print partner can make these innovations as episodes and disseminate to different institutions through their channel."

Dr. A. P. J. Abdul Kalam

(Speech Excerpt: **eMpi** - **The Indian EXPRESS** Indian Innovation Awards Ceremony...)



Our Global Network



Innovating Futures

INNOVATING FUTURES

(An ISO 9001:2015 Certified Institution)



▶ Former President Dr. A.P.J. Abdul Kalam with EMPIans after launching The MISSION INNOVATIVE INDIA



▶ Mr. N. Vittal receiving EMPI Life Time Achievement Award from Mr. Narayana Murthy on the inaugural day function - Vittal Centre for Management and Governance Informatics, presided by Dr. Natarajan, (Former Chairman AICTE) in the presence of Mr. Gurnam Saran & Mr. Pankaj.



▶ Late Dr. Udai Pareek (Founder Chairman, Udai Pareek HR-LABS) in consultation with Dr. Roland Sullivan (OD Expert and Author, Minnesota) and Mr. Gurnam Saran (President, EMPI Business School)



▶ Mr. Alyque Padamsee receiving the EMPI Life Time Achievement Award from Vice President Pankaj.



▶ Dr. D.V. Kapur, Chairman, EMPI Centre for Global Business, Entrepreneurship & Research with Academic Council Chairman P.S. Bami on the Convocation Day.



▶ Ms. Tara Sinha, Patron Chairperson, inaugurating the EMPI Institute of Advertising & Communication (AdCom)



◀ EMPI Patron Chairman, late Mr. Ajit N. Haksar with late Col. Satsangi and Mr. Gurnam Saran on EMPI B-School Foundation day

1994-95

Vision
Innovation
Commitment
Self-Discipline
Global Working



Achievers all,
passing the best of Indian
experiences and wisdom
to the youth in a
'learning through living'
environment



The Modern Gurukul for Individual Development

- Vibrant 24x7 residentiality in Executive Development House with internet, Cultural Centre & Movie Club.
- Executive Fitness Programme (Premium Gym, Tennis, Yoga, T.T., Badminton etc.)
- Personality Assessment Centre, Enhancement and Upgradation Processes (PACE-UP) Programme.
- Integrated group development with foreign students, researchers and academics.
- (GFP) General Fitness for Profession
- Strict implementation of anti-ragging & sexual harassment laws.
- Pollution free vast green campus.
- Safe, secure campus with separate hostel for men and women
- A secular environment with students and faculty from across India who work, live and learn together.
- Social Responsibility initiatives.
- Medical insurance coverage for students.
- Regular Bus Linkage to the nearest metro station.
- India's First State-of-the-Art Artificial Intelligence (AI) Lab powered by IBM
- Excellent Faculty from Industry & Academia including visiting from US / Europe.
- Go Abroad Programme (Internship/ Semester Exchange / Summer & Cultural Exchange).
- Academic Fusion **America**, Fordham, New York, Harvard IT Group, Boston, Wharton School (Globe Project) **European Union**, Finland, France, Italy, Poland, United Kingdom, **South East Asia**, Malaysia, Singapore, China, Japan, Korea.

EMPI Business School Group

Residential Campus:

Campus P.O. Near CSKM Public School Satbari,
Chattarpur, New Delhi - 110 074
Ph.: 91-8800010971, 8800010972
E-mail: admission@empi.ac.in

Website: www.empi.ac.in
Toll Free No.: 1800-103-5055



Who We Are



Late Mr. Gurnam Saran
Founder President, EMPI
Fmr. Director BHEL



Mr. Pankaj Saran
President, EMPI
Co-founder & Director,
A P Aerospace & Defence
Electronics Park

We are a group of Professionals and Academicians who believe that with passage of time our educational system has got heavily slanted towards scoring marks to somehow pass the examination. While it encourages a few to come up in life, the potential of vast majority of intelligent minds is surpassed.

Spotting the potential young minds and building capabilities worthy of a winner in life, thus becoming the *raison d'être* for our launching an ever growing ensemble of excellence-Faculty, Trainees and Students, operating in a well tuned 24*7 fully residential environment. With focus on individual grooming, appropriate stress has been laid on learning processes that are found in our heritage in Swami Vivekananda's thoughts but somehow lost in the past in our country's educational system- particularly in higher education.

Earlier in mid 1994, urged by CSKM Public School Chairman Lt. Col. Satsangi, VSM and Chairman Emeritus ITC Ltd., Ajit N Haksar, wanting to fill a need for establishing entrepreneurial, professional management education centre at the CSKM Educational Complex, young Psychologist & Management Consultant Pankaj conceptualized a blueprint to set up an institution that will nurture giftedness in individuals to achieve excellence. The concept gained momentum when former Director of BHEL, Sr. Management Consultant Commonwealth(UK) & President IEEMA Late Mr Gurnam Saran, then associated as MD in an American Consulting Group decided to return and stepped in as EMPI's founder President.

Huge response of admission seekers, majority of them drawn for highly intellectual family environments (Engineers, Doctors, Civil and Armed Services, Business Executives, Entrepreneurs and the like) to our Programme, indeed confirmed our hypotheses about the need for launching a different type of institution. Result...our spirited EMPIans- Lady & Gentlemen Young Managers(LYM's/GYM's) as we call them.

With Late Mr. Ajit N. Haksar at the helm who remained EMPI's Patron Chairman for more than a decade, we have been building centres of excellence led by successful Indians including Ms. Tara Sinha (the doyen of Indian Advertising), Late Dr. Udai Pareek (father of human Resource Education), Mr. P.S. Bami, former Chairman NTPC who became the Chairman of EMPI's expert

Advisory Council and Late Dr. S. P. Verma (Director IIPA), the founder Dean and Director. The baton of providing guidance to EMPI Institutions in 2005 was passed on to Dr. D. V. Kapur (founder Chairman NTPC). Currently Mr. N. Vittal, IAS Retd. (Enabler of India's IT revolution) is our Patron Chairman. Others joining the EMPI expert/governance groups include former Chief Justice of India Hon'ble Ranganath Misra, Mr. S. Regunathan, IAS Retd. (former Chief Secretary, Delhi. Late Mr. L. M. Singhvi (former Indian High Commission in UK), Late Dr. A. N. Saksena, former Additional Secretary, Govt. of India and Dr. Usha Dar, Director Research, World Environment Foundation.

Our Commitment

We are committed to identify, nurturing and enrich giftedness in individuals through continuous innovative pedagogy and distinctly different Gurukul like learning environment to bring out creative, entrepreneurial and managerial capabilities keeping in sharp focus the need to promote meritorious, innovative, enterprising and intellectual potential of our youth and collectively showcasing Indian achievements.

Our Belief in Equal Opportunity

We are in the policy of non-discrimination on the basis of caste, sex, race, colour, religion, age or national origin in all our endeavors, which include educational programmes, MDPs, Training and Development, Research, Consultancy and employment practices.



INNOVATING FUTURES

EMPI the name **Entrepreneurship and management Processes international** - signifies the changing emphasis on International management thought to **purposes** and **processes**, as also the fading distinction between entrepreneurship and management, with the need today for an entrepreneurial manager. The logo depicts this educational philosophy wherein the red spark and the dot symbolizes the raw energy of bright youth while the arrow symbolizes the channeling of energy for constructive personal and social growth.

(Concept & Design: Pankaj)

EMPI Business School has been set up to provide fast track management career commencing at Undergraduate, Post Graduate & Ph.D. level studies to bright and dynamic students including those who normally do not get inspired by traditional education. Simultaneously, by incorporating Innovation & Entrepreneurship dimension, it focuses on grooming the youth to become citizens of the emerging new world that are not catered to by traditional education.

As a distinct feature it focuses on personality enhancement and attitudinal transformation by employing innovative individual and group learning processes, psychological procedures and other inputs, thereby meeting the needs of the individual growth.



The Vision

EMPI has been envisioned as an institution of Excellence with key focus on capabilities building through:

- Comprehensive education for holistic development of each individual's personality with a human and global outlook.
- Synthesising in its educational processes innovation and Entrepreneurship with Management and vice-versa.
- A 24x7 learning environment which nurtures, motivates, and inspires development of managerial giftedness.

The Mission

EMPI is Translating its vision into practice by:

Launching comprehensive college level education programmes upto Ph.D studies, commencing at the Under-graduate (after 10+2) and Postgraduate level (after 3 years degree course subsequent to 10+2) which involve:

- Liberal arts for vision building.
- Technology appreciation for understanding the changing scenarios in the world today.
- Business skills along with the essential ingredients of business ethics leading to entrepreneurial orientation in whatever we do.
- Value from-work that is global yet national.
- Learning by doing.
- Creating industrial linkages and supporting centers to generate innovation and excellence.
- Forging links with International and National Universities, Institutes and Centers doing similar innovative work.

You Inspire us to Excel



"I greet EMPI for promoting a culture of organizational Innovation. Best wishes to EMPI in their mission..."

Late H.E. Dr. A. P. J. Abdul Kalam

Former President of India

(MISSION INNOVATIVE INDIA : Launch 2005)

"EMPI's uniqueness lies in building a 24x7 teaching, learning environment that synthesize Indian Heritage and values expressed in Swami Vivekananda's thought with the emerging high technology new world..."



Late Ajit N. Haksar

Chairman-Emeritus, ITC Ltd.

(Founder Chairman, EMPI B-School Group: 1994-2005)



"The Indian Innovation Awards, conceived by EMPI's Centre for Innovation, Entrepreneurship & Intellectual Property (CIEPRO), is conferred with a purpose to recognize innovation of a high order." (on launching day of MISSION INNOVATIVE INDIA by the then President)

Late Prof. M. G. K. Menon

Advisor, Indian Space Research Organization

(Jury Chairman, Innovation Awards)

"Good to see that EMPI apart from promoting a culture of innovation, saw this as a learning opportunity for post graduate and doctoral level students so that they could become bearer of Innovative India's flag in their careers."



Dr. D. V. Kapur

Founder Chairman, NTPC

(Patron Chairman and Counsellor, EMPI)



"EMPI is a good example of what private sector can do..."

N. R. Narayana Murthy

Chief Mentor, INFOSYS

(Speaking on EMPI's campus visit: 2004)

"Am glad to have been a partner in shaping the dreams of young Pankaj and running the Institution — EMPI, along with President Gurnam Saran - the Engineer, whom I witnessed toiling in sun and rain, building the infrastructure and concurrently establishing systems and policies for good governance and bringing the institution from scratch to its present stage."



Late Dr. S. P. Verma

Former Director, IIPA

(Sr. Dean & Director-Emeritus, EMPI)



"A unique institute (EMPI) with a very bright future..."

Late Dr. Udai Pareek

The HR Guru

(Founder, EMPI's Udai Pareek HR-Labs: 2004-2010)

"EMPI deserves congratulations for its unique initiatives..."



Prof. R. Natarajan

Former Chairman, AICTE

(Speaking on EMPI's campus visit: 2005)

Council Chairpersons & International Advisors



P. S. Bami
Chairman
Academic Advisory Board, EMPI
President, India Energy Forum
Former Chairman, NTPC



Padma Bhushan N. Vittal, (Retd.)
Patron Chairman, EMPI Group
Chairman, Telecom Commission, Govt.
& Former Secretary, Department of Electronics



Tara Sinha
Chairperson, Academic Council,
Ajit Haksar Institute of AdCoMM
President & CEO, Tara Sinha Associates
Former Chairperson, IIMC (Delhi)



Dr. T. V. Rao
Chairman
Udai Pareek HR - LABS (Academic Council)
Chairman, TVR Learning Systems Pvt. Ltd.
Founder President, National HRD Network



Roland Sullivan
One of the original 100
Change agents of the World,
Visiting Professor to EMPI



Dr. Vipin Gupta
Advisor, International Relations, EMPI
Prof. & Co-Director, Global Management Center
California State University - San Bernardino



Dr. Katherine Combellick
Visiting professor, EMPI
Director, International Service Learning
Gabelli School of Business
Fordham University - NY, USA



Ajay Sahai
DG & CEO
Federation of Indian Export Organisations
Chairman, Centre for Global Business
Management & Research

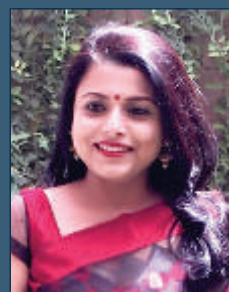
Leadership Team



Dr. Ashok Jain
Vice President
(Research & Acad. Dev.), EMPI
Fmr. Director, NISTADS, Govt.



Pankaj Saran
President, EMPI
Co-Founder & Director
A P Aerospace & Defence Electronics Park



Dr. Abira Saran
Vice President, EMPI



Vinod Midha
CEO, AIC - EMPI
Fmr. Exec. Director, BHEL



Dr. Raja Venkataramani
Director, EMPI
Fmr. Director, Deloitte



Dr. David Easow
Dy. Director & Residential Mentor
EMPI



Dr. Premasish Roy
Asst. Dean & Associate
Residential Mentor, EMPI

Our Programmes

2Yr. Full Time Post Graduate Diploma in Management

PGDM

(Approved by AICTE)

(1st Time in India)

AI Infused Management Programmes

(With Globally Recognized AI Skill & Knowledge Certification)

PGDM (General Management
Marketing / Finance)

PGDM (Advertising Communication)

PGDM (Global Business)

PGDM (Human Resource)

PGDM (Research & Business Analytics)
- *Pioneers in India*



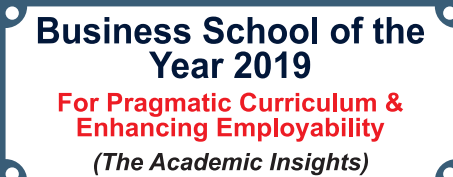
IBM Software Lab
on Artificial Intelligence
Initiative of the Career Education Program



In collaboration with
EMPI Business School, New Delhi



Recognitions



Best Institute in North for Industry
Institute Orientation



Start - Up Opportunities

EMPI was selected out of thousands of applicants by NITI Aayog, Government of India under their Atal Innovation Mission (AIM) to set-up a first of its kind Atal Incubation Centre, specially focused on Renewables, Smart Energy and New Electric Mobility with the underpinning of AI & IOT Technologies. The aim of the center is to create world-class incubation facilities with suitable physical infrastructure. The center would be providing comprehensive support to help young entrepreneurs and start-ups in domains such as Renewables, Smart Energy and New Intelligent & Electric Mobility to emerge as successful business enterprises that shall transform India.

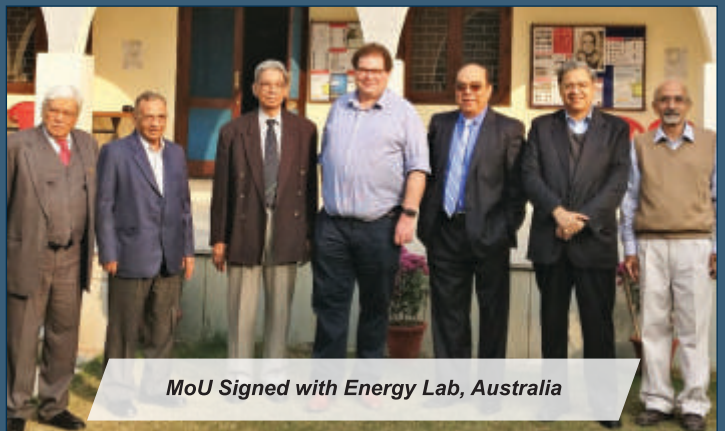


**Atal Incubation
Centre - eMpi**

Supported by AIM, NITI Aayog, Govt. of India



**Mr. Ramanathan Ramanan,
Mission Director, Niti Aayog, Gol Inaugurating
Atal Incubation Centre**



MoU Signed with Energy Lab, Australia



Masterclass Session



Display of Startup E-Vehicle Prototype



MoU signed with ECONET Japan, Malaysia.



MoU signed with Ricardo, India

Mentorship Support by Industry Majors:



Alumni



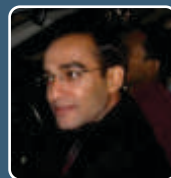
Nitin Mathur
Senior Director Marketing,
Head of Digital Customer
Experience
TE Connectivity



Nitin Nigam
Vice President - Transition
Risk & Governance
Deutsche Bank Group



Bhushan Tuli
Vice President &
National Product Head
Dewan Housing Finance
Corporation Limited



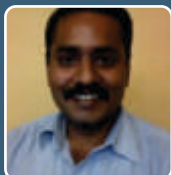
Mohit Bhatia
AGM (Marketing &
Land Acquisition)
ELDECO



Praveen Kumar
Head - Strategic Alliances
Tata Teleservices Ltd



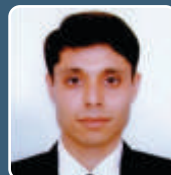
Ayan Bagchi
Director – Consulting &
Transformation Services
GENPACT



Ajit Kumar
Director - SME Online
Technologist Pvt. Ltd.



Shubhankar Dhar
Head of PMO (Digital
Transformation) at
Hathway Cable &
Datacom Ltd



Ashish Procthi
Director of Strategic
Business
Xebia India



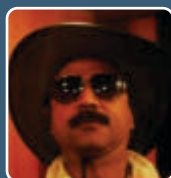
Gaurav Jain
Executive Director
at JPMorgan Chase



Sen Nachiketa
AVP & Head- Field
Operations
Tata AIA Life



Vinita Bhatia
National Head- Media,
Entertainment & Sports at
Bennett Coleman and Co. Ltd.



Avijit Tripathi
Director Marketing at
Velocity101 Training and
Placement Pvt Ltd



Gaurav Aggarwal
Senior Vice President,
Head of Data Management
& Analytics DBS Bank”



Rajeev Tiwari
Asst. General Manager
Monnet Ispat & Energy
Ltd



Shantanu Moulik
Global Alliance Head-G
lobal System
Integrators (Americas,UK,
EMEA, APJ) Dell



Subhabrata Dey
Director Sales -
Infrastructure Services
Wipro Technologies



Mandeep Singh
Director & Head of
Revenue - Youth & Movie
Channels Business Head -
Branded Content & Digital



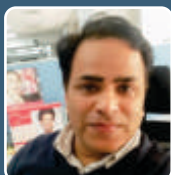
Manan Shah
Director Marketing India
Truecaller



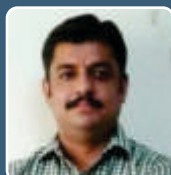
Ankur Goel
Director - Sales & Channels
(India & SAARC)
Polycom



Anil Solanki
General Manager & Head -
India Manufacturing &
Technology vertical - WIPRO



Gaurav Singh
Business Head-
Aesthetics
LG Life Sciences



Rishi Vinod
Ohri Unit Head
Dainik Bhaskar Corp Ltd



Amit Pathak
General Manager at
SYSCON FZE, UAE



Ashish Chandra
Cluster Business Head (DGM)
Reliance Communications



Alok Kumar
Country Manager - Liquid
Membranes at STP Ltd.



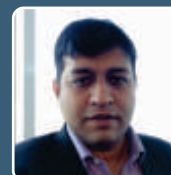
Sanjeev Kumar
Co-Founder
Springford Pte. Ltd.



Rakesh Kumar Mallick
Sr. Research Coordinator
Moody's Investors Service



Shailesh Saran
Group Manager (IMS)
Tech Mahindra



Sameer Yogi
Head - Global Business
Operations U2opia Mobile

Alumni



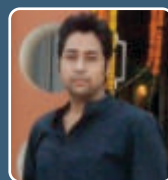
Jayesh Chuphal
Corporate Sales
Manager
Kotak Mahindra Bank



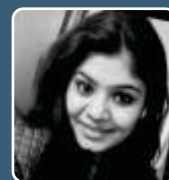
Adarsh Purohit
Vice President Marketing Jmd
Medico Services Ltd.



Arindam Paul
AGM
OYO Rooms



Ashish Choudhary
TSM
Havells India Ltd



HEENA TANDON
Assistant Manager
HDFC Bank



Mukund Jaiswal
Managing Director
Tirupati Ayurvedic
Pharmacy



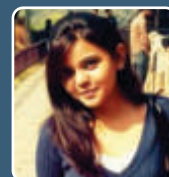
Vidit Jain
Sales Manger
(Online Ordering)
Zomato



Debosmita Chatterjee
Senior Search Associate
Lazzaro HR Solutions
Pvt. Ltd.



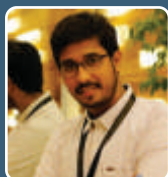
Himanshu Kataria
RM - WEALTH
Aditya Birla Money Mart
Ltd.



Riya Srivastava
Senior Analyst
Royal Bank of Scotland
Business



Prabhakar Singh
Team leader institutional
Sales
Berger Paints India



Prateek Jain
Brand Marketing Manager
Zoiro Lifestyles



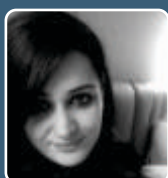
Niloy Gupta
Assistant Manager
Yokohama India



Amanpreet Kaur
Relationship Manager
Standard Chartered Bank



Tuhin Kanti
MandalAssistant Manager
EasyRewardz



Sakshi Chaturvedi
Assistant Manager
Citibank India



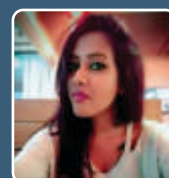
Subhasish Ranjan Das
Senior Associate
Bank of America Merrill Lynch



Ajmal Khan
Manager
Carwale.com



Divya Yadav
BTL
Lava International
Limited



Nivedita Nandi
Sr. Media Analyst | Marketing
Science at Hearts & Science
Omnicom Media Group Annalect
India



Vijay Singh
Regional Sales Manager
Lesso India



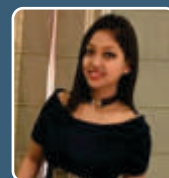
Ahmad Faraz
Territory Sales Officer
Marico Limited



Deepu Bajpai
Customer Development
office
Colgate Palmolive



Rohit Shahani
Senior Tax Consultant
Deloitte



Pooja Devi
Deputy Manager - Corporate
Communications
LESSO India



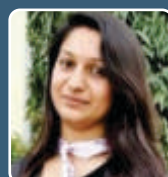
Himanshu Thukral
Financial Analyst
BlackRock



Pankaj Noonka
Associate Analyst
EY



Sukanya Panda
Credit Manager
HDFC Bank



Yoshita Ratnam
Assistant Manager
Operations
IOS Sports & Entertainment



Rituraj Singh
Account Manager
Times Internet

Corporate Connect

Targeting to groom individuals to become winners in Life and EMPI putting larger effort on learning than mere teaching, Organisations visiting EMPI Campus Placement Centre have acknowledged the distinguishing qualities of our pass outs. The Placements Centre activities are in regular contact with Business & Industrial Houses, as also prominent NGOs (national/International). Students take active part in driving the Corporate connect activities and thus learn the finer details about Corporate expectation. Necessary pro-active steps are taken to facilitate a variety of interactions with industry and business enterprises round the year, to make them aware of the unique feature of the EMPI programmes. We have an excellent record in placing our students for summer and final placements in various organizations with a 100% placement record.

Eminent practicing senior managers from the corporate world are invited to the campus to speak on various management issues and concurrent practices in their organization as well as share their experience and how the young managers can move ahead.



Mr. Alyque Padamsee, Advertising Guru



Mr. Alan Mamedi, CEO, Truecaller



Mr. Arun Batra, CEO, Matrix Cellular (International) Services Pvt. Ltd



Mr. Alan C. Adamson, GM, Cargill Trade Solutions India Pvt. Ltd



Mr. Satyajit Sen, CEO, Zenith Optimedia, India



Mr. Rohit Kumar, V.P, Hansa Research Group



Mr. Sumit Gupta Country Head, Macdonald Global Pelz



Mr. N. S. Rajan Partner & Global Leader- People & Organization- Ernst & Young

Some of Our Campus Recruiters

Gurukul Learning Environment

Our pedagogy is attempting a balanced mix of 24x7 classroom curriculum, non-classroom learning and on the job work experience to shape the right set of attitudes, skill, knowledge and vision. The unique learning methods include participation in Debates, Quizzes, Elocution, Business Games, Projects, Case Studies, Management Simulation, Organizing of Events, Campaigns, Sports & Games.



Mr. Sastry Tumuluri, Chief R & D officer, Suyati Technologies interacting with the participants at Hackathon



Mr. Anil Chhikara, Chairman, Startup India Foundation



Simi Anderson, Sr. Industry Mentor, Interacting with students



StockMind Competition



Conference participation



EMPlans at United Nations Conference Centre, Bangkok

India's First Artificial Intelligence (AI) Lab

Centre of excellence for Artificial Intelligence business research, teaching, theory, and practice Powered by IBM AIC-EMPI AI Lab (Artificial Intelligence Laboratory) enables students to navigate the Artificial Intelligence (AI) landscape. The lab assists students, start-ups and industry across the globe with navigating and learning the complex field of application of Analytics and Artificial Intelligence in Management. The lab is equipped with state-of-the-art hardware and software, as well as cloud infrastructures and live data from IBM Weather Channel for projects and insights to help businesses make better and faster decisions.



Executive Fitness

EMPI's Executive Fitness is a unique programme which commences with the day break. It helps students to internalise leading a disciplined work life through daily participation in choice of activities like yoga, aerobics, taekwondo, multi-gym or other games. This strengthens the students both physically and mentally, which is the key to success in today's stressful world.

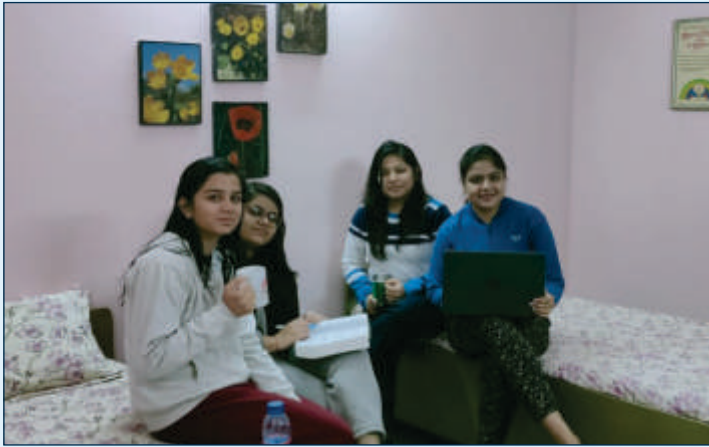


Mentor - Mentee & Personality Enhancement Programme

One important aspect of EMPI's efforts to enable all round development of Management students is the Mentor-Mentee system. It is essential to understand the strengths & weaknesses of individual students & their need for support on specific areas. Towards this end each student is assigned one faculty mentor who closely monitors his / her academic performance & personal developments are followed up to guide them through their 2 yrs stay at EMPI. Regular weekly meetings with these mentees is inbuilt in the time table & the personal data of the mentees is maintained to assess the required support inputs. Periodically the performance of the Mentees are discussed at the Faculty Meetings, where all the Mentors are present.

Executive Development Academy (Separate Hostel for Girls & Boys)

EMPI has separate hostels for girls and boys with both AC and Non-AC rooms option. The Hostels can accommodate about 1000 people from not only different corners of the country but also from various countries (in the International Hostel wing). Each room is provided with an attached bathroom with hot and normal 24 hours water supply. Both the hostels are Wi-Fi enabled and have separate Common Rooms, which have facility for indoor games.



Activities on Campus

In the gurukul learning environment of EMPI, students involve themselves in various academic, non-academic, cultural, entrepreneurial & CSR activities. There are various clubs led by students with a faculty co-ordinator to guide them. Involvement in these extracurricular activities helps them to understand the importance of critical thinking skills, time management, and academic and intellectual competence. Working outside of the classroom with diverse groups of individuals allows students to gain more self-confidence, autonomy, and appreciation for others. Specifically, participation in extracurricular activities and leadership roles in these activities are positively linked to attainment of one's first job and to managerial potential.



Foreign Faculty

Special lectures, workshops, seminars and sessions taken by visiting foreign faculty from EMPI's network of international partner institutions helps students get prepared for a world that is multicultural and multinational. Students also get an opportunity to do joint classes and projects with students of partnering institutions.



Mr. Piers Grove,
Managing Director, Energy Lab (Australia)



Prof. Margaret Osborne,
Seneca College, Canada



Prof. Kate Combellick,
Fordham University, USA



Prof. Marcia Flicker,
Wharton University, USA



Prof. Richard Colombo,
Fordham University, USA



Prof. Harold Dyck & Prof. Frank Lin,
California State University, SB, USA

Live Projects

Live Projects are a regular and essential feature of the EMPI learning process. It helps them get real life experience and learn the application of the management concepts and principles studied in the classroom. Domain specific live projects helps each student gain valuable work experience even before they are placed.



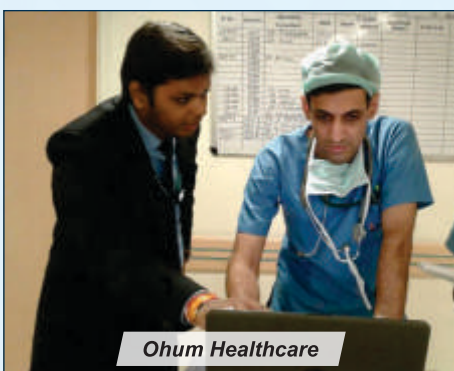
SMC Global



Bajaj Capital



Amazon India



Ohum Healthcare



BWDIsrupt



Max Hospital

Social Responsibilities

EMPI aims at developing students who are not only good managers but also responsible and conscientious citizens. With this objective in mind students are encouraged to take up various social responsibility initiatives like Blood Donation, Participation in Clean India Campaign (Swachh Bharat Abhiyan), Project on Fair Trade, Anti-Smoking Campaigns, Organizing Donations for the poor and the underprivileged, Relief work for flood and landslide victims and other various activities to engage with different sections of the community.



Fair Trade and Microcredit



Working with children Smile for Life (NGO)



Think for the 'NEEDY'



Relief work on behalf of Goonj (NGO)



Blood Donation Camp



Swachh Bharat Abhiyan

Industrial Visits

Industrial visits are an essential element of EMPI's education as focus on theory and practical is an integral element of the holistic learning process. As such there are regular industrial visits in different industry sectors such as Logistics, FMCG, Consumer Durables etc.



Indian Oil



IBM



Yakult



Mother Dairy



Mahindra & Mahindra



Hewlett-Packard

Seminars and Conferences

Students at EMPI regularly attend national and international seminars and conferences which not only expands their vision on the current industry trends, issues, challenges, future growth potential and prospects but also listening, interacting and networking with industry leaders gives an immense boost to their confidence.



**International conference on
7th World PetroCoal Congress**



**Seminar with Jennifer Iannolo's
at American Center, New Delhi**



**Seminar on India - South Africa
Renewable Energy Operations**



**Workshop on Awareness
and Capacity Building**



**11th International Conference on
Technology, Policy & Innovation**



**World Renewable Energy
Technology Congress (WRETC)**



19th India Power Forum



**International Conference on
6th World PetroCoal Congress**



**41st National Management
Convention**



**Seminar on How CSR is
beneficial to business**



**CII Grassroot Start-Up
Conference**



9th Nuclear Energy Conclave

Global Connect

International Conference for Technology Policy & Innovation (ICTPI)

EMPI's CIEPRO (Centre for Innovation, Entrepreneurship & Intellectual Property) conducted 11th International Conference for technology Policy & Innovation (ICTPI). 'ICTPI' is an international initiative to discuss and exchange ideas on technology policy and innovations at a tier one conference held annually in different countries since 1997.



11th ICTPI held at India Habitat Centre, New Delhi

EMPI EU-India International Business Management Centre

This first of its kind effort in India, fully supported by the European Union, was established to serve as an applied business research centre pertaining to Indo-European Economic and Business Issues. The centre operated through a triangular research corridor with the University of Turin, Italy and Helsinki School of Economics & Business Administration, Finland, facilitated the transfer of doctoral student and faculty-researchers, so as to develop joint research on varied areas of interest.



EU-India Economic Cross-Cultural Programme

GLOBE (Wharton School of Business International CEO study)

EMPI has been the country co-investigator of the India segment of a worldwide research programme GLOBE of the Wharton School, a major research study on CEOs. This project in India is led by our Research Unit Head Mr. Pankaj Saran. An extension of the Globe project that is now under launch is an Indo-China IT project "Why India is ahead in Software and how China may catch up? Examining the cultural factor". This project brings together EMPI Business School, New Delhi, GLOBE, The Wharton School, US and the City University of Hongkong. The study climaxed in a worldwide publication by the famous Ashgate publisher (UK). This project was being conducted under the direction of Mr. N. Vittal, former Secretary, Department of Electronics and Telecom, Government of India.



EMPI's Joint Project with Asian Media Information & Communication Centre (AMIC) Singapore

EMPI has a major tie-up with AMIC Singapore, an internationally renowned Asian umbrella body on Communication and Media with regional chapters spread all over the Asia-Pacific. EMPI has very closely collaborated with the Indian chapter of AMIC, Singapore which is headed by Dr. M. S. Swaminathan and has Mr. N. Murali of Hindu as well as Mr. Vijay Menon amongst others distinguished personalities on its board. EMPI and AMIC have conducted joint projects on a number of areas including e-governance, UNESCO's International Programme for the Development of Communication, Economic Journalism etc.



UNDP Consultancy by Udai Pareek HR - LABS

HR LABS of EMPI B-School provided consultancy to UNDP for their modules on human development in the area of pedagogy, i.e methodology of teaching these modules. HR -LABS examined the modules in details and suggested various pedagogical devices to be used in different places. Various interventions were suggested to generate experiences while teaching the modules. Some of the modalities suggested were instruments for the readers to collect self-generated data; interview to collect some first hand data; exercises simulating some social processes like conflicts, collaborations, living styles etc; role plays; cases; critical incident and analytical exercises.

EMPlans Abroad

Since 1995, EMPI has established partnerships with more than 75 reputed institutions across the globe as it fosters a climate of world-class quality education of international standard and global outreach. Students are offered a number of exciting opportunities to study abroad for a semester at a partner university, attend summer schools, cultural exchange programmes, participate in joint research, projects, overseas internships, international study tours and global volunteer programs.



Summer Programme at Thailand



Internship at Egypt



Exchange Programme at Korea



Global Leadership Programme at Indonesia

International Students at EMPI

In keeping with its philosophy of internationalization, EMPI offers a number of opportunities for students from across the world through EMPI's partner institutions to visit EMPI for a number of learning programmes such as international student exchange, seminars, training programmes, study tours, summer schools and internship etc. to gain once-in-a-lifetime opportunity to discover the unique wonders of India.



California State University, USA - Training Prog.



Simmons College, Boston, USA - Exchange Prog



EAFIT Colombia - Innovations Prog.



Interns from Vietnam



Inholland University, Netherlands - Exchange Prog.

National Initiatives

MISSION INNOVATIVE INDIA

In 2005, EMPI initiated the annual Indian Innovation Awards under the 'Mission Innovative India' with the blessings of the then President of India, Hon'ble Dr. A.P.J. Abdul Kalam. The following year, The Boston Consulting Group joined in as the Research Partner and Process Validator and the awards were re-christened as the 'EMPI-Indian Express Indian Innovation Awards' with the joining in of the leading national newspaper group - The Indian Express. The Awards celebrate innovative corporate, non-corporate, government and network organizations as role models by documenting and disseminating their innovation stories.

In pursuant of the Innovation Mission, EMPI has furthered a number of initiatives like the launching of the EMPI journal on interdisciplinary perspectives - 'Innovations', conducting jointly with the prestigious India International Centre, New Delhi, lecture series on 'The Change Agents – Innovative Indian Organizations', National Innovation Fellowships and introduction of the 'International India Innovations Programme' for International faculty, researchers and students.



"My best wishes to EMPI, Indian Express and other innovation promotion organizations success in their mission of making global innovation index of India to be less than five within the next five years."

Dr. A. P. J. Abdul Kalam (Speaking on EMPI Indian Innovation Awards Ceremony 2007)



eMpi - The Indian EXPRESS

INDIAN INNOVATION

AWARDS

recognising innovative organisations

Some of the Awardees

- LV Prasad Eye Institute
- Mother Dairy Foods Processing Ltd.
- Multi Commodity Exchange of India
- Mahindra & Mahindra
- Mindtree Consulting
- Narayana Hrudayalaya
- National Stock Exchange of India Ltd.
- Tata Consultancy Services
- Tata Motors



Dr. A.P.J. Abdul Kalam, President of India,
awarding Mr. Promod Bhasin, President & CEO, Genpact



Smt. Sheila Dikshit, Hon'ble CM,
receiving the memento from President, EMPI



Dr. Montek S. Ahluwalia,
Dy. Chairman, Planning Commission, Gol
awarding Deputy Election Commissioner



Mr. Nandan Nilekani, Chairperson, UIDAI, Gol
awarding Samtel Display Systems



Dr. A.P.J. Abdul Kalam, President of India,
releasing EMPI's inaugural issue of 'Innovations' Journal



The august gathering at the Awards venue

We Think for India (WTI)

EMPI conceived and structured India's first Participative Public Policy Forum on National Manufacturing Sector Policy in 2003 along with FICCI and Business World 166 teams from across the country participated including the IITs, IIMs, KPMG, TATAs etc. The culmination of the competition was at the Prime Minister's residence where the then Hon'ble Prime Minister Shri Atal Bihari Vajpayee gave away the awards to the top teams. A book on 'India's Manufacturing Sector – Policy Framework' was released in the presence of Shri. Arun Jaitley, Minister of Law, Commerce and Industry, Govt. of India WTI was the first kind of its effort in the country wherein students and faculty actually came together to contribute to policy making and it proved to be a successful model in shaping the policy narrative of Manufacturing in India.



Mr. R. Rajkumar of IIT Delhi receiving the Award



Quality Practices Survey for achieving Global Standards

A unique initiative taken by EMPI's Research Unit which has the potential to change the Quality Image of India is an applied research study in different sectors and perhaps the first of its kind study in country. The purpose: to create a record of current practices (or non practices)

covering pertinent factors like quality culture, quality process models, techniques being pursued and extent of success and failure in their implementation. Our initiative got support not only from PHDCCI but also from a host of research bodies from other countries including from the Konrad Adenauer Foundation-PHDCCI, Cleveland Adenauer Manufacturing Program (CAMP), USA, Mombusho Scholars Association of India (MOSAI), Japan and the Science and Technology Policy Institute (STEPI), Korea.

Mobility Mission

EMPI Institutions conducted India's first Mobility Mission Festival at the EMPI Campus. The event witnessed an overwhelming response pan India and Internationally. The festival brought together students, start-ups, MSMEs and corporates to address the future mobility disruption paradigm. The festival synchronised with the Inauguration of EMPI's Atal Incubation Centre by Mr. Ramanathan Ramanan, Mission Director, AIM, Niti Aayog, Gol.



Inaugural Speech by President, EMPI



Group Presentation



E-Vehicle Expo



Display of E-Vehicle made by Students



Panel Discussion by Mobility Experts



Award Presentation

National Initiatives



Launch of ELCINA - VIC ESDM Model Cluster

Work - Live - Learn - Play - Create



Banners showing the concept of different Enclaves in VIC

Stone of the City was laid on 23rd June, 2012, by Padma Bhushan N. Vittal, IAS (Retd.) along with Dr. Ajay Kumar, IAS, Joint Secretary, Ministry of IT. Located about 70 Kms from the Bangalore Airport, development of its first Electronic Components Manufacturing Sector has been taken up in collaboration with ELCINA.

With focus on building a global hi-tech city integrating the

Befitting our vision, EMPI launches Vittal Innovation City near Bangalore. Visualising the need for creating an Education-Centric city - a city of the future, where Industry is committed to concurrently focus on Human Resources / Skills development on the one hand and Technological development through Research at the same time, EMPI Vice President (Strategic Initiatives) Pankaj Saran, under the inspiring leadership, conceived a distinct blueprint for building such a combination of clusters comprising of various industry groups and named it 'Vittal Innovation City', to honour Mr. N. Vittal. Foundation



Mr. Pankaj Saran, CEO & Member Promoting Team of the Innovation City, explaining the concept to Chief Minister Mr. Narendra Modi at Vibrant Gujarat



Signing of Memorandum of Understanding with the Heidelberg Technology Park

elements — Work - Live - Learn - Play - Create, world renowned consultants, Doha Engineering, South Korea have been engaged for developing the master plan.

CAPA (Centre for Aviation) India, a global aviation knowledge practice and Vittal Innovation City (VIC) have signed a Memorandum of Understanding (MoU) to co-promote a high-technology aviation manufacturing, research and knowledge park to be known as CAPA-VIC Aerospace City.

Location and Connectivity

EMPI is a residential campus, located in a southern suburb of New Delhi, in a pollution free green area. It is about 5 kms from two Metro Stations: Qutub Minar and Chattarpur, and about 15 kms from the international airport. The Metro connects all parts of Delhi and the surrounding areas, called the National Capital Region. The newly emerging suburb of Gurgaon is just 20 minutes away by Metro. Transport-wise, other than the Metro Rail services, EMPI is well connected with important destinations in Delhi & NCR by Delhi Transport Corporation and private modern buses and taxi service.



Metro Rail



Parliament House



Rashtrapati Bhavan



Cultural Pageant (ICCR)

Network for Global Business and Cultural Associations

Location of Institutions conducting Management and Professional studies in the Capital City – Delhi, has obvious advantages. First is the distinguished linkages possible with Chambers of Industries like FICCI, PHD Chambers, ASSOCHAM, FIEO, the National HRD network and the AIMA/ Delhi Management Association; the global agencies like the World Bank, UNDP, ILO and the foreign embassies; access to good libraries and information centres; and centres of intellectual/cultural assemblage like the India International Centre, the India Habitat Centre, the Schools of Drama & Dance and the like. EMPI as an institution not only links with these Institutions but also enables vision building visits to the Republic Day, Industrial & Global Fairs at the Pragati Maidan, National Gandhi Museum, Raj Ghat and the like.



Shopping Mall



Capital of India: Meeting Place of the Globe



Formula 1 Race



Delhi Auto Expo 2012



Federation of Indian Chambers of Commerce and Industry (FICCI)



India International Centre

EMPI signed MoU with Eighteen International Universities



Admission Procedure

Eligibility

- Graduates with minimum 50% marks in any discipline from a University recognized by UGC / AICTE
- Candidates appearing Final Year of Bachelor's Degree can also apply
- Pre-qualification through CAT, MAT, XAT, CMAT, and GMAT

Application Submission

- **Office:** Application form can be obtained from EMPI Campus on cash payment of Rs. 1000. The application form can be downloaded from our website and duly filled application form should be sent across along with the demand draft of Rs. 1000/- drawn in favour of "EMPI PGI" payable at Delhi.
- **Online:** Application form can be filled and submitted online on our website by paying the application fee of Rs. 750/- .

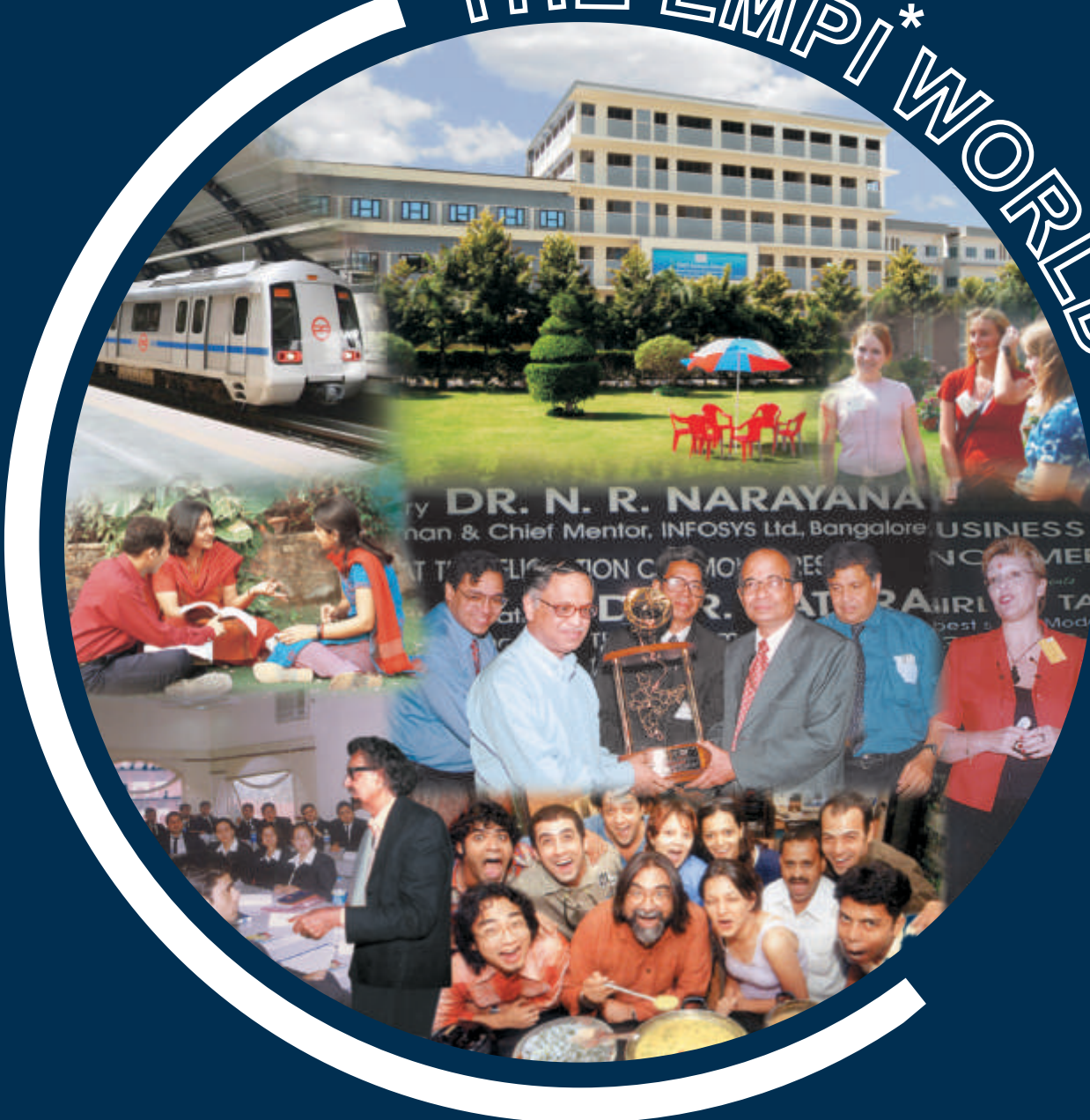
Selection Process

- The selection to the Post Graduate Diploma in Management programme is purely based on the cumulative performance in CAT / MAT / XAT / CMAT / GMAT score followed by group discussion and personal interview. The group discussion and personal interview are integral components of the admission process.
- Due weightage will be given to past academic achievements and work experience respectively, apart from the above mentioned parameters.
- To identify and assess the interpersonal skills each applicant is tested through EMPI's Psychometric profile testing.

Scholarships (Merit based)

- Selected students who have an excellent scholastic record of achievements from 10th class onwards will be considered for scholarship.

THE EMPI*WORLD



INNOVATING FUTURES

(An ISO 9001:2015 Certified Institution)

EMPI* Group Institutions

EMIP Residential Campus:

Campus P.O. Near CSKM Public School Satbari,
Chattarpur, New Delhi - 110 074

Ph.: 91-8800010971, 8800010972

E-mail: admission@empi.ac.in

Visit: www.empi.ac.in • Toll Free Number: 1800-103-5055

***Entrepreneurship & Management Processes International**

Copyright ©, 1996 : All rights reserved. No part of this publication may be reproduced, stored in a retrieval system or transmitted in any form or by any means, electronic, mechanical, photo-copying, recording or otherwise without prior permission of the copyright owner.

Version 11/2015