

**MIT-WPU**

॥ विश्वशान्तिर्ध्रुवं ध्रुवा ॥

TRANSFORM. ACHIEVE. LEAD.

# B.Com | M.Com

*WPU School of Economics  
and Commerce*



**ADMISSIONS  
2024**

[mitwpu.edu.in](http://mitwpu.edu.in)

# MIT World Peace University (MIT-WPU)

MIT World Peace University (MIT-WPU) is a prestigious world-class institution for higher education in India, boasting a remarkable 40-year legacy dedicated to fostering excellence in academics. With a global alumni network comprising over 100,000 professionals, MIT-WPU has consistently delivered outstanding educational outcomes. The institution offers over 150 undergraduate and postgraduate programmes that are thoughtfully designed to strike a balance between theoretical foundations and practical application. The pedagogical approach prioritises experiential learning, empowering students to translate knowledge into real-world skills. This is facilitated through immersive internships and invaluable mentor-mentee insights that serve as catalysts for personal and professional growth.



# University Highlights

---

- ◆ **100,000+** Alumni Globally
- ◆ **1600+** Companies visited for placement
- ◆ International Students from **30** countries
- ◆ Merit-Based Scholarship worth **Rs. 50 Cr.**
- ◆ Highest University Package: **Rs. 51.36** Lakhs CTC
- ◆ Outcome based learning aligned with Bloom's taxonomy
- ◆ Experiential learning through Rural, National & International Immersion and Co-creation Programmes.
- ◆ Lateral learning through events like RIDE (Research, Innovation, Design, Entrepreneur-ship), SLDP (Social Leadership Development Programmes) & more
- ◆ The curriculum is taught by international academicians, industry practitioners, and alumni.
- ◆ Practical and real-life experience with Industry sponsored Capstone projects, Internships, & Seminars
- ◆ Holistic development through participation in Yoga, Patriotism, Peace, Agriculture & Spiritual programmes.





# Why a Commerce Degree Programme from MIT-WPU?

MIT-WPU offers a diverse portfolio of commerce degree programmes, which include the B.Com, B.Com International Accounting and Finance (in collaboration with ACCA), B.Com Advanced Accounting and Auditing, M.Com, and M. Com with CIMA\*\* programmes. Each programme is collaboratively designed and developed by eminent Indian and international academics, ensuring a comprehensive blend of theoretical and practical learning.

Prioritising experiential learning, MIT-WPU emphasises hands-on educational approaches. The institution fosters meaningful mentor-mentee relationships, providing students with valuable guidance and insights. Complementing this,

internships and immersion programmes are integral components of the curriculum, offering students tangible opportunities for real-world learning and personal growth.

Whether delving into the fundamentals of commerce through B.Com, specialising in intricate areas like International Accounting and Finance, Advanced Accounting and Auditing, or pursuing advanced studies in M.Com and M.Com with CIMA, students benefit from a holistic educational experience. The collaborative and immersive nature of the programmes ensures that students are not only well-versed in theoretical concepts but are also equipped with practical skills, preparing them for successful careers in the dynamic field of commerce.

## Programme Offered

---

- ◆ Bachelor of Commerce (B.Com)
- ◆ Bachelor of Commerce - International Accounting and Finance (in collaboration with ACCA)
- ◆ Bachelor of Commerce - Advanced Accounting and Auditing
- ◆ Bachelor of Commerce Fintech (Financial Technology)
- ◆ Master of Commerce (M.Com)
- ◆ Master of Commerce with CIMA\*\*



# WPU School of Economics and Commerce

The WPU School of Economics and Commerce at MIT-WPU excels in the education and training of students, equipping them to reach the pinnacle of professionalism and practice. Offering a spectrum of programmes, including undergraduate, postgraduate, and Ph.D. options in commerce, economics, public policy, and sustainability studies, the School shapes students into genuine future leaders and collaborative team players.

With a core focus on empowering students with the essential skills to seamlessly integrate into the corporate landscape, the School boasts an exceptional faculty. Comprising distinguished academicians and accomplished corporate leaders, the faculty at the WPU School of Economics and Commerce at MIT-WPU uphold the highest standards of teaching and learning, ensuring that students not only receive a world-class education but also gain invaluable hands-on learning experiences that enrich their academic journey.



# Department of Commerce & Accounting

---

The Department of Commerce and Accounting at MIT-WPU is committed to cultivating skilled professionals who possess a comprehensive understanding of financial analysis, tax management, statutory accounting, statistical analysis, and other critical competencies essential in the finance sector. Underpinned by a curriculum meticulously crafted by industry experts, the department offers a range of undergraduate and postgraduate programmes. These programmes, underpinned by robust research, industry engagement, and an innovative interdisciplinary approach, are dedicated to nurturing a new breed of corporate leaders with holistic development at their core.

Through a pedagogy rooted in practical application, the department strives to instil values of partnership, innovation, spirituality, humanity, and global peace. The department's mission is to equip students with the knowledge and skills necessary for success in the global accounting and finance arenas, empowering them to achieve their broader professional and academic aspirations.



# Programme Highlights



Case-based, application-oriented, and research-focused learning methodology.



Regularly updated curriculum in collaboration with industry experts to align with current industry trends and requirements.



Skill enhancement and competency development through value-added courses such as Forensic Accounting, Advanced MS Excel, Financial Modeling, Six Sigma, and more.



A dedicated Centre for Industry-Academia Partnerships (CIAP) facilitating internships and placements with renowned organisations worldwide.



Insights from industry visits, guest lectures, seminars, and workshops led by distinguished corporate leaders from the Big Four.



A robust global alumni network of over 100000 alumni.



A diverse range of elective subjects tailored to individual professional aspirations.



Engagement in live industry projects, exposing students to real-world challenges in the field.



Academic immersion initiatives encompassing rural, national, and international experiences.



Additional certification courses to enhance employment prospects.



Comprehensive support for internship placement with a 100% assistance rate.



Elective courses that aid students in achieving their specific professional objectives.



Nurturing entrepreneurship among students through funding, mentorship, and networking opportunities within MIT-WPU Pune Technology Business Incubator (TBI).



“

**The highest education  
is that which does  
not merely give us  
information but  
makes our life in  
harmony with all  
existence**

## Dean's Message

---

It is said that “The highest education is that which does not merely give us information but makes our life in harmony with all existence”. On behalf of all our faculty, staff and students, I am pleased to welcome you to the MIT-WPU Department of Commerce. We offer undergraduate and postgraduate degree programmes in Commerce driven by research, consultancy, and industry orientation, futuristic and interdisciplinary studies focused on holistic development of a new generation of corporate leaders.

Being a Commerce department within a university provides tremendous opportunities for our students to excel in a forward-thinking, technology-rich environment. This is the place where professional skills embrace life skills to ensure that our graduates are business-educated, applications-focused and success-driven!

The Department of Commerce is backed by a team of dedicated, experienced and academically strong professors. In addition, students are guided by professional mentors from the field of Academics and Industry, available to help them plan their course of study and activities. You will find our renowned faculty members to be highly focused on student success. They are dedicated to bringing real-life experiences into the classroom to enhance the learning outcomes of the students.

With the ever-changing and evolving modern-day economic scenario, it is the need of the hour to equip tomorrow's professionals with the ability to adapt to change and overcome the challenges posed. To enhance the skill sets of students, we also offer various Value Added Programmes and Short Term Certificate Courses. These courses are designed specifically keeping in mind the inputs from the industry as well as to improve the practical skills of our students.



As a part of MIT-WPU methodology, we offer a unique Peace Studies course along with Yoga and meditation; experiential learning through our Immersion programmes, and teaching methodology which is an ideal blend of classroom teaching with experiential learning, project-based and outcome-based learning. Students are a constant source of innovation and to cater to the diverse needs of students, we have a variety of student clubs. Faculty members play the role of facilitators for these clubs which provide exposure to the students to cultural, extracurricular and co-curricular activities.

Education at MIT-WPU will help prepare you become an articulate communicator, a careful thinker, and a person who is concerned with good health, and healthy, interpersonal relationships that cross cultural boundaries. This aspect of your education will awaken inquiries into areas you never thought interesting before and it will add sparkle and innovation to your world. Above all, an MIT-WPU education fosters the development of your spiritual self, which can lead to the peace of mind we all seek.

## **Dr. Anjali Sane**

Dean,  
WPU School of Economics & Commerce



# Academic Partnerships: Making Learning Global

The Department of Commerce and Accounting has collaborated with International Universities, including:

- ◆ Macquarie University, Sydney, Australia
- ◆ University of La Trobe, Victoria, Australia
- ◆ Vrije Universiteit, Amsterdam, Netherlands

The Department of Commerce and Accounting at MIT-WPU actively collaborates with prestigious international universities, underscoring its unwavering commitment to providing a truly global education. These programmes enable learning beyond borders through the cross-pollination of international disciplinary approaches.

MIT-WPU remains dedicated to nurturing, enriching, and maintaining its global relationships, continually expanding intercultural networks for its students. This commitment is exemplified through the implementation of student and faculty exchange initiatives, summer and winter programmes, research collaborations, extra credit programmes, and various other enriching and engaging activities; all geared towards providing a comprehensive and globally enriched educational experience.





# Academic Programmes



# Bachelor of Commerce (B.Com)



Duration - 3 years\*



Fees - ₹80,000/- PA

B.Com degree programme by MIT-WPU offers a well-rounded blend of core and elective courses, featuring specialisations in Cost Accounting, Banking and Finance, and Marketing Management. Students engage with accounting, taxation, costing, financial management, auditing, and management accounting fundamentals through a comprehensive approach that includes case studies, expert sessions, and practical projects. The curriculum places a strong emphasis on application-based learning, aligning with industry needs and nurturing professional and entrepreneurial skills among students. It further enhances the learning experience through interactions and dialogues with industry stalwarts and corporate leaders, alongside a choice-based credit system. This programme effectively equips students for diverse career paths, spanning business, academia, and corporate sectors, enabling them to thrive in a dynamic and competitive professional landscape.



# B.Com in International Accounting and Finance (in collaboration with ACCA)



Duration - 3 years\*



Fees - ₹1,35,000/- PA

B.Com in International Accounting and Finance programme at MIT-WPU, in collaboration with the ACCA (The Association of Chartered Certified Accountants), the United Kingdom, is meticulously structured to empower students with a distinct edge in addressing global business challenges. The B.Com course curriculum adheres to international standards, equipping students with comprehensive knowledge and adept problem-solving skills in the domain of international accounting and finance. Spanning multiple subjects within an intensive framework, this programme is globally recognised, enjoying accreditation in over 170 countries and garnering approval from over 8,500 employers. Collaborating with ACCA further presents students with the privilege of exemptions from 9 out of 13 ACCA papers, with the remaining 4 subjects seamlessly integrated into the B.Com curriculum.

This programme stands as one of the rare few in India to receive accreditation from ACCA.









# B.Com in Advanced Accounting and Auditing



**Duration - 3 years\***



**Fees - ₹1,35,000/- PA**

The B.Com Advanced Accounting and Auditing programme at MIT-WPU equips students with the proficiency to navigate the intricate terrain of modern accounting and auditing practices. They gain the insights needed to devise optimal strategies for organisations, ensuring meticulous tracking of financial transactions, adherence to statutory regulations, and provision of quantifiable financial data to stakeholders such as investors, management, and governmental entities, ultimately facilitating more informed business decisions.

Throughout the course, students acquire the ability to evaluate business performance, formulate budgets, make future projections, and effectively manage the preparation of financial statements and tax returns. Additionally, the

curriculum incorporates subjects from the Chartered Accountancy Course, endorsed by the ICAI, further enhancing students' professional competencies and employability prospects. Upon graduation, students are well-prepared to embark on diverse career pathways, spanning the private and public sectors, public accounting firms, market research, corporations, and consultancy services.

\*Eligible students who opt for the 4th year of the undergraduate programme will be awarded an Honours degree as per the New Education Policy (NEP) 2020.

# B.Com Fintech (Financial Technology)



**Duration - 3 years\***



**Fees - ₹1,35,000/- PA**



## **Career Opportunities**

- ◆ Assistant Auditors
- ◆ Cost Accountants
- ◆ Commercial Analysts
- ◆ Indirect Tax Managers
- ◆ Payroll Managers
- ◆ Professional Accounting Technicians
- ◆ Tax Consultants
- ◆ Chartered Advisors
- ◆ Assistant Financial Accountants
- ◆ Business Analysts
- ◆ Risk Managers
- ◆ Senior Fund Managers
- ◆ Accounts Payable and Expenses Managers

A proposed programme, in collaboration with the UK-based ACCA (Association of Chartered Certified Accountants), B.Com in Fintech focuses on Commerce and Management disciplines such as Accounting, Finance, Audit, Taxation, and Law, integrating Accounting, Finance, and Technology modules in alignment with modern finance practices. Accredited by ACCA, the programme offers 6 exemptions, and students must pass 3 exams for the ACCA Advanced Diploma in Accounting & Business. Additionally, students can pursue the ACCA Certificate in FinTech through online assessments.

The current trends and driving forces in Fintech are explored in "Fintech – transforming finance," uncovering the revolution's various facets. For professional accountants, this presents numerous opportunities as Fintech embeds itself in society. From the potential of blockchain to the challenges of valuation in the digital era, students gain insights on how to capitalise on emerging prospects.

Acknowledging Fintech (Financial Technology) as the future of finance, the MITWPU infrastructure, equipped with smartboards, a computer lab, and high-speed connectivity, caters to the evolving educational needs of commerce students. The university provides access to databases like CMIE, EPW – Time Series Database, JSTOR, Scopus, Elsevier, keeping students abreast of the volatile, uncertain, complex, and ambiguous (VUCA) world.

\*Eligible students who opt for the 4th year of the undergraduate programme will be awarded an Honours degree as per the New Education Policy (NEP) 2020.

ANALYSIS 3



MATERIAL | Average



Date / Confirmed	Value
May 2 2021	197.37
May 15 2021	99.32
May 28 2021	69.35
Jun 10 2021	52.74
Jun 22 2021	63.02

JUN  
YOUR TEXT HERE







# Master of Commerce (M.Com)



Duration - 2 years



Fees - ₹80,000/- PA

The Master of Commerce programme at MIT-WPU, in collaboration with the Chartered Institute of Management Accountants (CIMA), focuses on conceptual knowledge, logical reasoning, critical thinking, and analytical prowess in a business context. It responds to the burgeoning demand for students equipped with analytical and quantitative problem-solving skills. The operational level of CIMA is exempted for MIT-WPU M.Com students. This research-driven programme introduces a 'Research' specialisation, strategically designed to prepare students for the multifaceted demands of both industry and academia. The Department actively encourages and facilitates student participation in various knowledge-sharing platforms, such as seminars, conclaves, symposiums, workshops, and conferences, enabling students to cultivate and demonstrate their research proficiency. Key research domains encompass Accounting, Small and Medium Enterprises, Business Policy, Stock Trading, Public Finance, International Trade and Finance, Entrepreneurship and Business Models, and Strategy. Students have the option to pursue a CIMA specialisation in parallel with their M.Com degree. Upon successful completion of the Management Level of CIMA, students earn an M.Com. degree from MIT-WPU and an Advanced Diploma in Management Accounting from CIMA, adding significant value to their qualifications and career prospects.

# Eligibility & Selection Criteria

## Undergraduate Programme

- ◆ Minimum 50% aggregate score in 10+2/Class 12th or in equivalent examination with English subject in any stream from Govt. Approved Institution or equivalent (at least 45% marks, in case of Reserved Class category candidate belonging to Maharashtra State only)

Or

- ◆ Minimum 60% aggregate score in 3-year Diploma from any Govt approved Institution or equivalent with English as a subject.

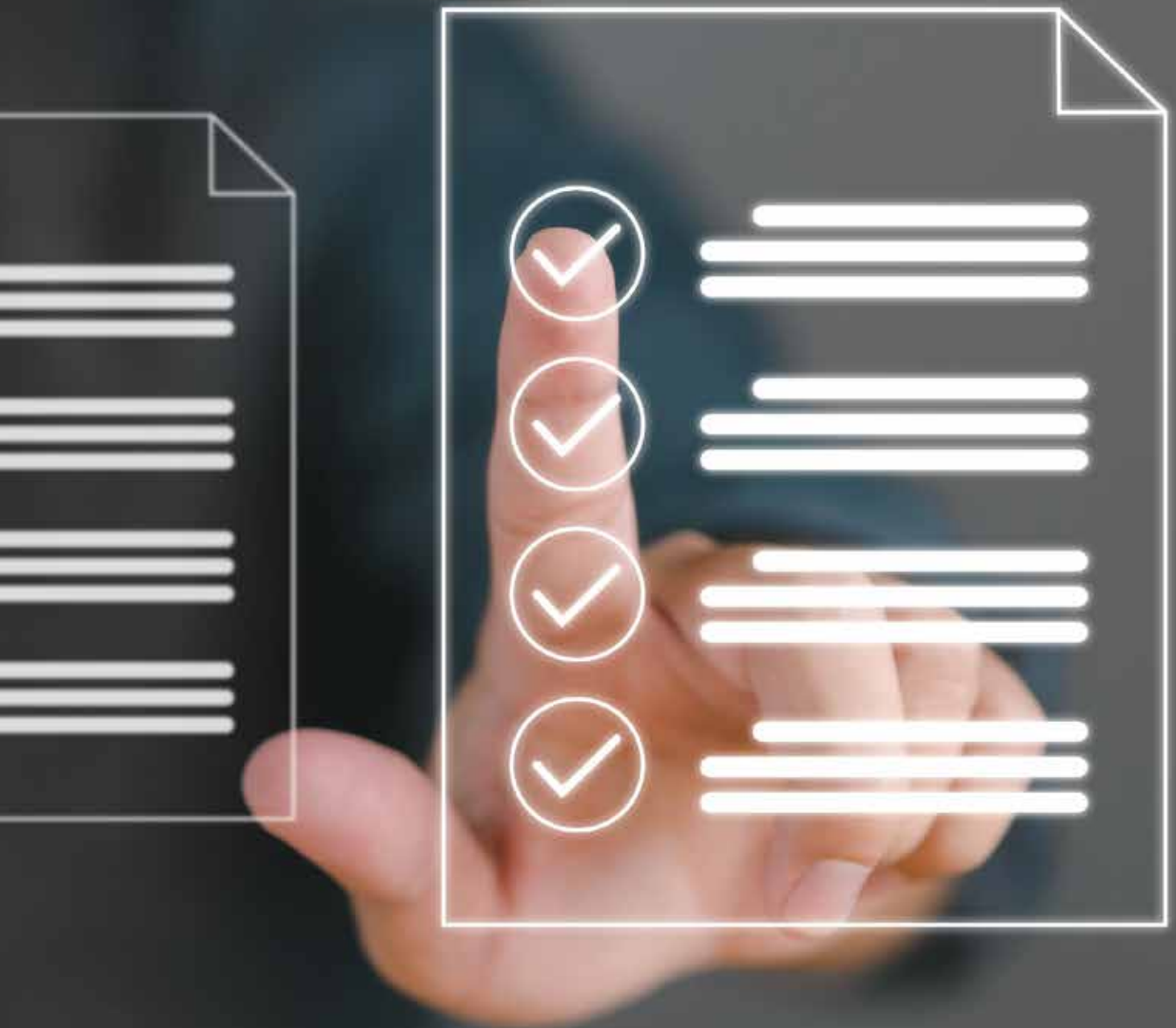
Or

- ◆ Minimum 60% aggregate score in Competency and Vocational Courses (MCVC) from any Govt approved Institution or equivalent with English as a subject.
- ◆ The selection process for the programme is based on MIT-WPU CET Entrance Exam 2024 & Personal Interaction (PI) score.

**Note:** All International Baccalaureate (IB) students are required to score a minimum of 24 points for six subjects.

## Postgraduate Programme

- ◆ Minimum 50% aggregate score in B.Com or allied fields of 3-year graduation (Commerce/Management) from UGC approved Institution or equivalent (at least 45% marks, in case of Reserved Class category candidate belonging to Maharashtra State only)
- ◆ The selection process for the programme is based on MIT-WPU CET PI (Personal Interaction) 2024 score.





# Scholarships

MIT-WPU offers scholarships to reward and motivate meritorious students based on their performance in National/State Level Entrance tests and the MIT-WPU CET Examination, 2024. These scholarships are applicable throughout the programme\*.

## Merit Scholarship Categories:

- ◆ Dr. Vishwanath Karad Merit Scholarship AY 2024-25
- ◆ MIT-WPU Merit Scholarship AY 2024-25
- ◆ Scholarships for Elite Sports Persons AY 2024-25
- ◆ Scholarship for Wards of MIT-WPU/MAEER's Staff Members

## \*Terms & Conditions:

- ◆ All Scholarships are awarded on a First Come First Serve basis.
- ◆ All Scholarships are awarded as fee adjustments.
- ◆ To continue the scholarship for the entire duration of the programme:
  - a. A minimum level of academic score has to be maintained at an 8 CGPA across all semesters.
  - b. Attendance is to be maintained at a minimum of 80%.
  - c. There should be no disciplinary action against the student.

For more information visit

[mitwpu.edu.in/scholarships](https://mitwpu.edu.in/scholarships)

# Bachelor of Commerce (B.Com)

Scholarship for AY 2024-25	Dr. Vishwanath Karad Scholarship (100%)	MIT-WPU Scholarship I (50%)	MIT-WPU Scholarship II (25%)
Name of programme/ Specialisation	MIT-WPU CET CBT Score	MIT-WPU CET CBT Score	MIT-WPU CET CBT Score
<b>B.Com International Accounting and Finance</b>	<b>88 &amp; Above</b>	<b>85 &amp; Above</b>	<b>80 &amp; Above</b>
<b>B.Com Advanced Accounting and Auditing</b>			
<b>B.Com Fintech</b>			
<b>B.Com</b>			

\*CBT Score = Online Computer Based Test conducted within the MIT-WPU CET 2024 process.

Students will be entitled to only one of the scholarships based on MIT-WPU CET 2024(CBT- Computer Based Test) Score.

# Master of Commerce (M.Com)

Scholarship for AY 2024-25	Dr. Vishwanath Karad Scholarship (100%)		MIT-WPU Scholarship I (50%)		MIT-WPU Scholarship II (25%)	
Name of programme/ Specialisation	Graduation Aggregate Score	XII <sup>th</sup> Aggregate Score	Graduation Aggregate Score	XII <sup>th</sup> Aggregate Score	Graduation Aggregate Score	XII <sup>th</sup> Aggregate Score
<b>M.Com</b>	<b>90 &amp; Above</b>	<b>85 &amp; Above</b>	<b>86 &amp; Above</b>	<b>81 &amp; Above</b>	<b>84 &amp; Above</b>	<b>79 &amp; Above</b>

Note: Student will have to qualify both the criteria i.e. Graduation Aggregate Score and XII<sup>th</sup> Aggregate Score for availing the scholarship.

# Internships: Bridging the Gap between Theory and Practice

---

Experiential learning is an indispensable facet of the academic experience at MIT-WPU. Within the Department of Commerce, each programme mandates a comprehensive internship as an integral part of the curriculum. This internship is meticulously structured to facilitate the seamless blend of theoretical classroom knowledge with its real-world practical counterparts, fostering the development of essential skills within a professional ecosystem. Through these internships, students gain invaluable exposure to practical, real-world scenarios, thereby cultivating critical perspectives that are invaluable for shaping prosperous and fulfilling future career trajectories. This practical immersion equips them with the hands-on skills and insights that are highly sought after in the professional arena.

**Highest Stipend**

**INR 75,000 per month (Barclays)**

# Placement Cell: Paving Pathways to Success

---

The Training and Placement Cell at MIT-WPU takes on a pivotal role in facilitating placements for students who have successfully completed their B.Com and M.Com programmes. It actively engages with renowned firms and industrial establishments to create opportunities for our graduates, a commitment that has led to consistently impressive placement statistics over the years.

The Placement Cell extends its support to all students by organising comprehensive career guidance programmes. In addition, it conducts a range of training initiatives designed to enhance students' employability, such as Mock Interviews, Group Discussions, Communication Skills workshops, and various other skill-enhancement workshops. These efforts collectively contribute to ensuring that our graduates are well-prepared to embark on successful and fulfilling careers.

**Highest Package**

**INR 11.75 LPA**



# Top Recruiters

---



## Testimonials

### Here's What Our Students Have To Say

---

Studying at MIT-WPU is undoubtedly a wonderful learning experience. The University offers excellent professors and fantastic learning opportunities. It encouraged me to explore new avenues. Faculties are available at all times to guide you. The most admirable aspect of this University is how it fosters spirituality in its pupils through its peace programme. Overall, this institution equips students with the skills necessary for lifelong learning and for the real world.

“

— **-Khushi Mishra**

It was my immense luck and fortune to be a part of MIT-WPU where I can grow. The professors leave no stone unturned to shape one's future. Last 1.5 years at MIT-WPU have been a wonderful experience of learning with prolific exposure to the industry. Huge respect, love and devotion for entire faculty members and department. It's their efforts that make me count myself as a good professional and a much better person.

“

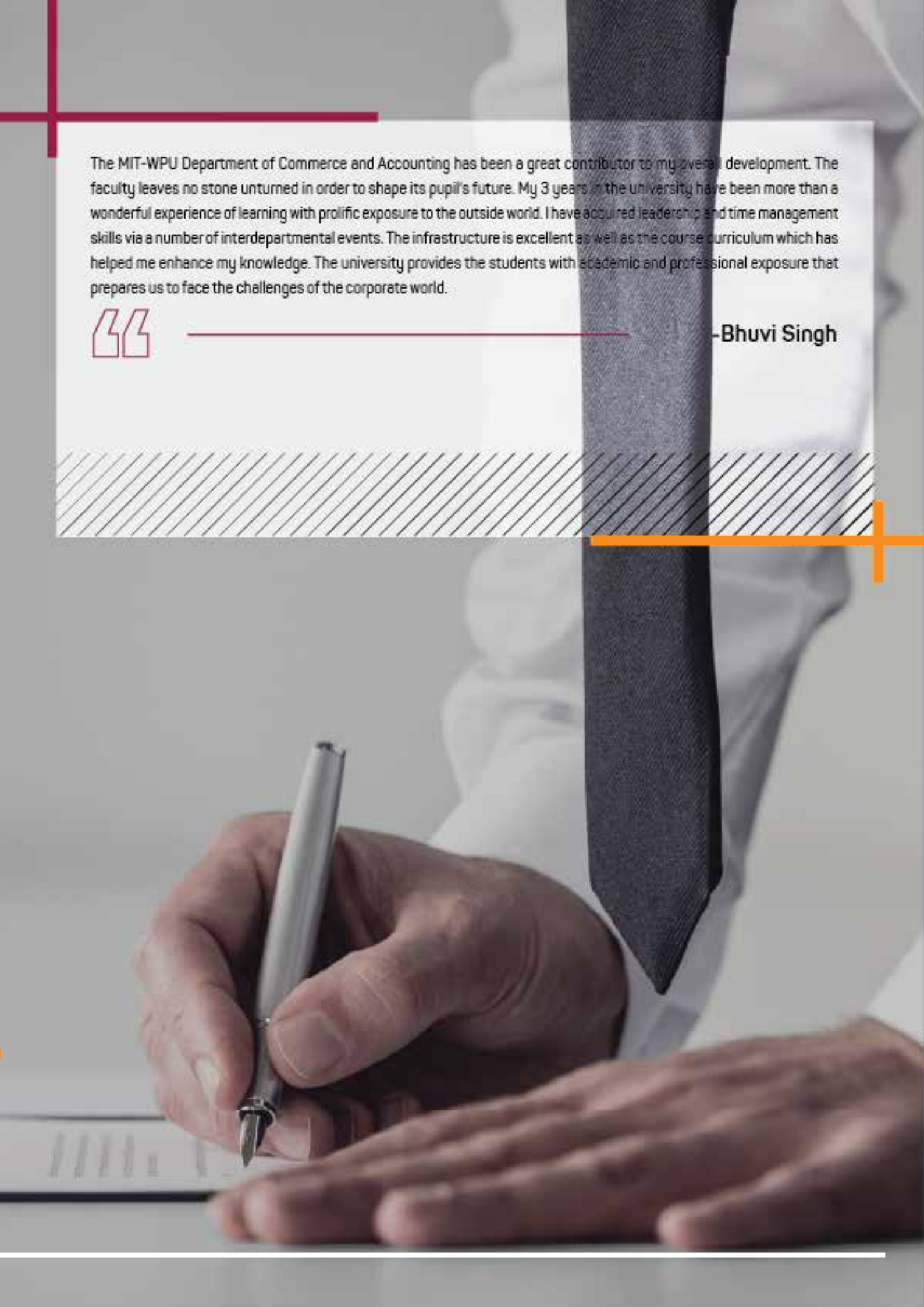
— **-Dhruv Patil**

My three years at MIT-WPU were wonderful and I will cherish these memories for my lifetime. As I am a very social person, I am constantly looking for fresh challenges and experiences. The MIT-WPU Department of Commerce and Accounting is the ideal setting for one to be brave and express themselves without inhibitions. The MIT-WPU Department of Commerce and Accounting moulds and develops the youth and prepares them for life's toughest challenges. As the President of the Udaan Sports Club, I can assure you that, provides a perfect balance between Academics and Extra Curricular Activities. I am also grateful to the Internship and Placement Cell for providing us amazing opportunities and bringing the best for us.

“

— **-Vishwajeet Patil**





The MIT-WPU Department of Commerce and Accounting has been a great contributor to my overall development. The faculty leaves no stone unturned in order to shape its pupil's future. My 3 years in the university have been more than a wonderful experience of learning with prolific exposure to the outside world. I have acquired leadership and time management skills via a number of interdepartmental events. The infrastructure is excellent as well as the course curriculum which has helped me enhance my knowledge. The university provides the students with academic and professional exposure that prepares us to face the challenges of the corporate world.



—Bhuvi Singh



# Events @ MIT-WPU

## R.I.D.E. Igniting Innovation and Entrepreneurship

R.I.D.E. stands out as a unique educational initiative by MIT-WPU, fostering entrepreneurship beyond academics. This 5-day event, attracting over 10,000 students, showcases cutting-edge research, design thinking, and innovation across diverse domains. With 100+ startups and 50 venture capital experts, R.I.D.E. provides a real-world startup context, encouraging unconventional thinking and exposing participants to transformative dynamics and market trends.



## Bharatiya Chhatra Sansad Empowering Youth for Change

A brainchild of Shri. Rahul V. Karad and flagship initiative of MIT-WPU, Bharatiya Chhatra Sansad (BCS) is a nationally recognised initiative empowering youth in India's political landscape. Serving as a non-partisan platform, BCS engages young minds in debates, discussions, and addresses by distinguished personalities, fostering awareness of the socio-political landscape. Acknowledging the contributions of young leaders, sarpanches, and activists, BCS, with participation from 25,000 institutes nationwide, empowers youth to actively shape India's future in governance and administration.





## Rural Immersion Programme

The rural immersion programme of MIT-WPU provides students with a unique educational experience. Through village visits, students engage in hands-on projects such as optimising irrigation, water conservation, waste recycling, and solar power integration. This immersive learning develops critical thinking, problem-solving skills, and community awareness, fostering a profound understanding of rural dynamics and innovative solutions.



## Other MIT-WPU Events

- Design Xpo
- Aarohan
- Kala Mehfil
- Hackathon
- National Conference on Media and Journalism
- Abhivyakti
- TEXEPHYR
- Tesla
- Techogenesis
- RoboCon
- Science Expo
- World Parliament of Science, Religion and Philosophy
- Bharat Asmita National Awards
- National Women's Parliament
- International Symposium on Law and Peace
- Vidhi-Manthan
- Peace Marathon
- Sports Summit
- Social Leadership Development Programme (SLDP)
- And many more...



# MIT-WPU Student Clubs

MIT-WPU is a vibrant hub for student involvement, boasting over 100 clubs spanning cultural, social, sports, co-curricular, and NCC/NSS categories. Such student-led clubs provide students with a platform for active participation, connection-building, and leadership skills development.

- The Innovation Club is a hub for entrepreneurial and innovative events and workshops
- The Art and Photography Club brings together aspiring artists for creative expression
- The Sports Club, orchestrating spirited sporting events and activities
- The Cultural Club celebrates diversity and fosters cultural exchange
- Aatman- The sole Mental Health Club led by Psychology students, promoting well-being
- Team Dart- A motorsports team participating annually in the Rally Car Design Challenge (RCDC)

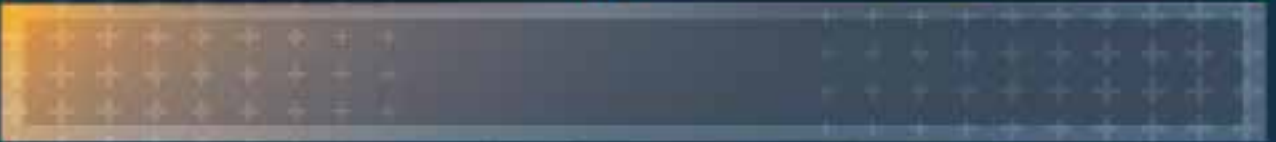
These clubs excel in national and international competitions, amplifying the dynamic MIT-WPU experience, nurturing leadership, and fostering holistic personal growth. Active participation in these diverse student clubs empowers students to optimise their time, enhance their skills, and contribute purposefully to the community.







CHAITANYA





# Life @ MIT-WPU







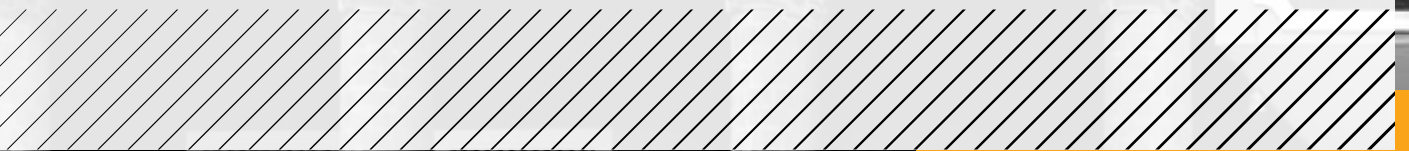


# Peace Studies: Fostering Holistic Growth

Understanding the importance of inner and social peace and conflict management skills is crucial in today's world. MIT World Peace University has adopted UNESCO's core vision of 'Building Peace in the Minds of Young Men and Women' as its guiding ethos.

The university offers a mandatory course of peace studies that lays the foundation for spiritual peace and harmony. It explores new ideas and practices from various cultures to tackle the challenges of global peace and sustainable development. The university also plans to introduce an advanced postgraduate degree programme in Peacebuilding and Conflict Management that offers state-of-the-art learning opportunities to study traditional and contemporary pedagogies of peacebuilding and conflict management.

The main objective of this course is to prepare students to become agents of social change and genuine global citizens. It trains them in non-violent communication to promote peace and prevent violence in communities and workplaces. Furthermore, the peace studies module also acquaints students with diverse yoga practices that enrich their cognitive prowess and information base, refining critical thinking and enhancing their overall personality. This interdisciplinary course, developed with input from scholars and practitioners worldwide, helps students build knowledge of India's spiritual and cultural ethos. Additionally, the course covers essential conflict management knowledge and skills that are in high demand in today's corporations.



# Admission Process

1

Start application at admissions.mitwpu.edu.in by filling enquiry

2

Receive Login ID and Password

3

Fill Application Form and submit form till last page (Pay application fees for entrance examination- Rs.1500)

4

Receive relevant Link for MIT-WPU CET process

5

Appear for MIT-WPU CET process (Date will reflect on Student Dashboard/Website)

6

Check result on Application Student Dashboard, once results are declared (Dates notified on email)

7

Receive provisional offer of admission (if selected, on registered email)

8

Complete Programme Fee Payment (1st Instalment)

9

Complete all sections of Registration Portal (Payment/ Personal/Education/Documents)

10

Receive Student PRN (Permanent Registration Number) on registered email

11

Original Document Submission

12

Welcome to MIT-WPU!



Dr. Vishwanath Karad  
**MIT WORLD PEACE UNIVERSITY** | PUNE  
TECHNOLOGY, RESEARCH, SOCIAL INNOVATION & PARTNERSHIPS

Call: +91-20-71177137  
WhatsApp: +91 9881492848 (Message only)  
Email: [admissions@mitwpu.edu.in](mailto:admissions@mitwpu.edu.in)  
Website: [mitwpu.edu.in](http://mitwpu.edu.in)  
Address: MIT-WPU, Kothrud, Pune.

Scan to Apply



Disclaimer :This brochure provides general information about the programmes. Dr. Vishwanath Karad MIT World Peace University, Pune (MIT-WPU) reserves the right to revoke, modify, add or delete one or more of the terms and conditions outlined in the brochure. MIT-WPU reserves the right to amend the provisions of the programme, eligibility, admission & scholarships without notification & as deemed fit / appropriate due to any changed circumstances.